

Family Activities

SHARING THE MISSION AT HOME
AND IN THE WORLD



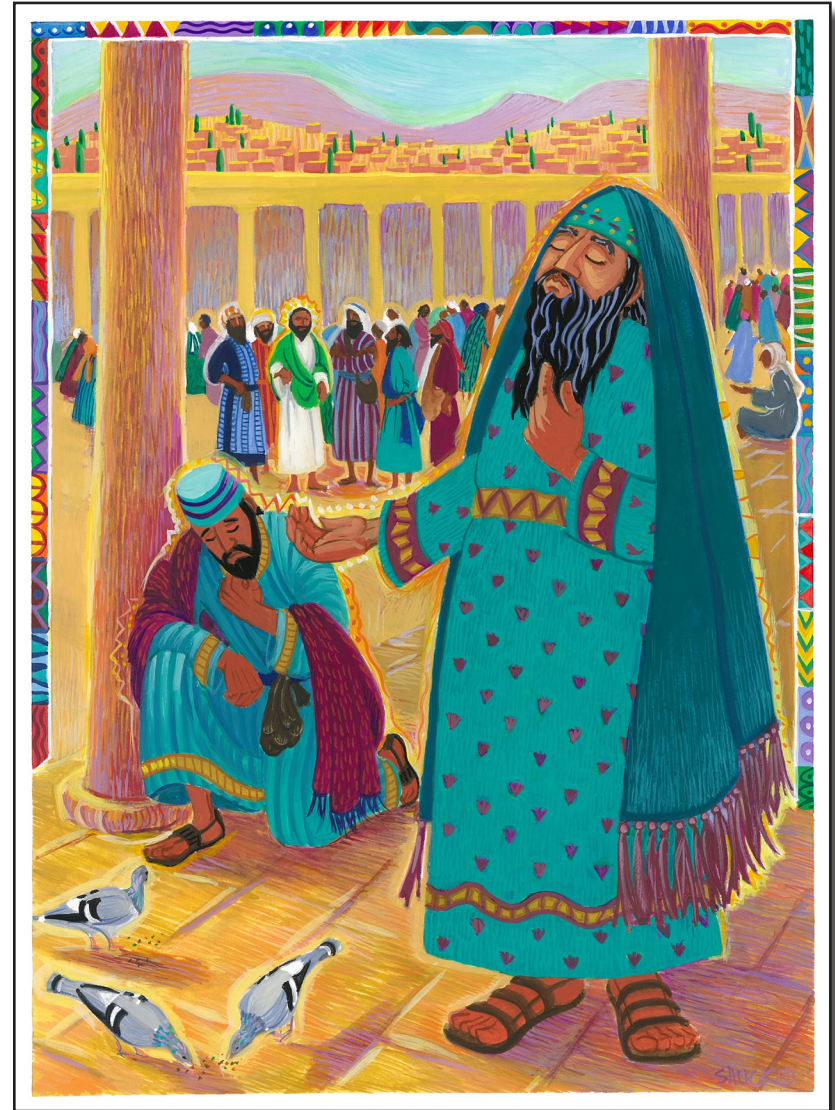
QUESTION OF THE WEEK: How do the members of your family encounter “better than blues” in your daily lives? Commit to an action of humility and service and put it into practice. At the end of the week, report in to each other how it went.

CHARACTER QUALITIES: **HUMILITY**
RELIANCE ON GOD

ADDITIONAL FAMILY ACTIVITIES: Create a collage. Find pictures of people behaving self-righteously like the butterfly and the Pharisee, and behaving humbly like the lamb and the tax collector. Talk about the change of heart that would be required of those people to extend themselves in humility and service. What would it look like for them to act on it? What new actions can you take to help cure this kind of “blues” in your family? Your church? Your school? Your neighborhood?

Gospel Illustration

30TH SUNDAY OF ORDINARY TIME, CYCLE C
GOSPEL OF LUKE 18:9-14



THE PHARISEE AND THE TAX COLLECTOR

~ Vicki Shuck, Esperanza Arts

Whoever exalts himself will be humbled,

and the one who humbles himself will be exalted. ~ Luke 18:14